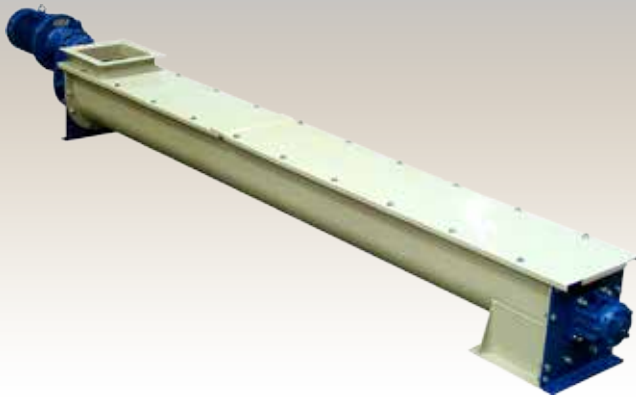


Waste Water Treatment

Trough Screw Conveyors CA

20



Description ▼

The modular CA Trough Screw Conveyor system is highly versatile offering numerous solutions for conveying powdery or granular materials. CA Screw Conveyors are manufactured from carbon steel with a suitable surface finishing. They are made up from a U or V-shape trough that is equipped with at least one outlet spout, an end plate at each trough end, helicoid screw flighting welded on a centre pipe with a coupling bush at each end, two end bearing assemblies complete with shaft sealing unit, a certain number of intermediate hanger bearings depending on the overall length of the screw conveyor, and bolted trough cover sections. Furthermore, CA Trough Screw Conveyors are equipped with a gear motor that suits the application. Depending on the material to be handled CA Trough Screw Conveyors come in a light, medium-heavy, or extra-heavy-duty design.

Function ▼

The medium-heavy-duty version, CA.P, is the one mainly used in environmental technology for both municipal and industrial applications. Depending on the application, various types of screws, inlet and outlet spout models are available.



Application ▼

CA.P-type Trough Screw Conveyors find their application for example in sludge drying plants for both handling wet and dry sludge in granular form.

Benefits ▼

- ✓ Splined or bolted shaft couplings;
- ✓ Intermediate cast hanger bearings with greased or self-lubricating slide bushes.

Waste Water Treatment

Trough Screw Conveyors CA

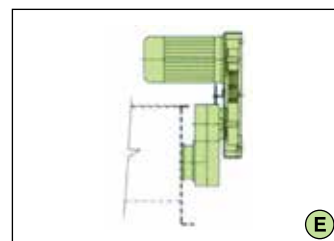
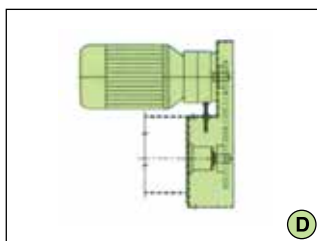
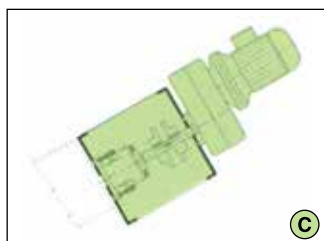
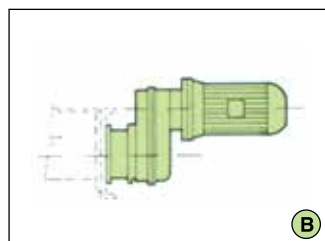
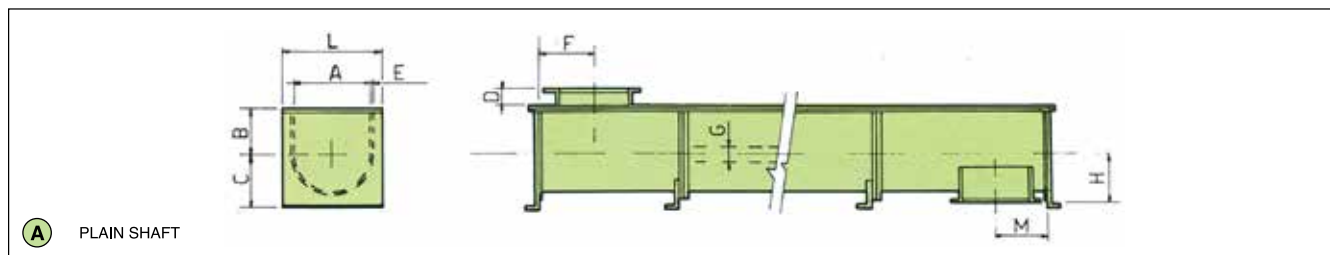


Technical Features / Performance ▼

- ▶ Powder-coated
- ▶ Helicoid flighting welded on centre pipe
- ▶ Trough in modular flanged sections in standard lengths
- ▶ Flanged end bearing assemblies protected by shaft seals against material infiltration
- ▶ Robust cast iron body flanged end bearing assemblies with external bearing units and manually adjustable packing gland seals
- ▶ Square or rectangular outlet spouts with integrated drilled WAM® standard flanges
- ▶ Drive units mounted at inlet or outlet end:
 - Bare shaft
 - Direct compact gear motor drive
 - Direct gear motor drive with semi-elastic coupling
 - Offset gear motor drive with chain transmission
 - Offset drive with belt transmission

Overall Dimensions ▼

MEDIUM HEAVY-DUTY



• DIRECT DRIVE

• FLEXIBLE COUPLING

• CHAIN TRANSMISSION

• PULLEY DRIVE

Dimensions in mm

CONVEYOR Ø	A	B	C	D	E	F _{min}	G	H	L	M
150	175	115	145	60	2	88	60	130	265	170
200	225	135	185	60	2	113	60	165	315	195
250	275	160	215	60	2	138	60	195	365	220
300	325	195	245	60	3	163	114	225	435	260
350	375	235	275	60	3	188	114	255	485	290
400	425	270	405	80	3	213	114	285	540	340

This datasheet might not show the complete range but only the models most suitable for the application.

